

*Appledore in the First World War is representative of many small communities, there were only 547 inhabitants at the beginning of the War. The men who went to fight were agricultural workers, wheelwrights, or used to dealing with horses and served in several different regiments in all theatres of the War around the world, in both the Army and Navy. Their place in the community was taken briefly by other young men away from home and serving with the 4th Battalion the Lancashire Regiment.*

*In 1914 the arrival of Belgian refugees brought the War closer to home, as the villagers became aware of what was happening to civilians in Belgium. These refugees were housed in Court Lodge Road and made friends in the village; with the children attending the village school and the families attending services at the Church.*

*On the Home Front men served as Special Constables helping to guard the Bridge. Women registered their ration books at Avery's and children at the village school were allowed to miss lessons in order to help with harvesting.*

*In the village the names of 16 men who served and fell are remembered along with the other 45 who fought and returned.*

*We hope that our trail provides you with an insight into the impact that the First World War had on rural communities.*

*Pictures to the right, from top: Avery Post Office interior 1026ASH Courtesy Appledore Local History Society; Avery and Sons 953ASH Courtesy Appledore Local History Society; South End Appledore, published by Avery and Son.*



1026ASH Courtesy Appledore Local History Society



953ASH ©Appledore Local History So



South End, Appledore.

947ASH ©Appledore Local History Society

Published by



# Appledore First World War

## A Walking Trail

*Revealing the history of local people, places and events*

*This trail was developed in partnership with Tracy Morgan, Brian Knight and Keith Fazzani*

*To discover more and take part in the quiz visit:  
[www.kentww1.com](http://www.kentww1.com)*

The QR code below takes you to the 100 miles for 100 years app, alternatively visit the website for a direct link.



*Leaflet design by Laura Haines*

# Appledore Trail

Distance: 0.6 of a mile (1 km)

Car Park Appledore Village Hall, TN26 2AE, free spaces for 25 cars.

Credits: 1) 942ASH Courtesy T Morgan; 2) 943ASH copyright T Morgan; 3) 949ASH copyright Appledore Local History Society; 4) 1028ASH; 5) 946ASH copyright T Morgan; 6) 941ASH Courtesy T Morgan; 7) 951ASH copyright Appledore Local History Society; 8) 948ASH copyright Appledore Local History Society; 9) 1029ASH copyright T Morgan; 10) 960ASH copyright T Morgan; 11) 1027ASH Courtesy Appledore Local History Society.

Please respect the privacy of residents and use the trails in a considerate manner to others.

## 1 Village Hall and Car Park

Displayed outside the Village Hall is a First World War 15 inch Howitzer Shell, which was presented to the village in recognition of its contribution to the war effort by purchasing War Bonds. After many years of neglect the shell was renovated and placed in its current position in November 2014.



## 2 The Methodist Chapel

The Methodist Chapel was founded in 1836 and has a memorial tablet listing the 61 men from the village who served, of whom 16 fell - these are listed on the Central panel. Some of these men would have attended the Church and Sunday School.



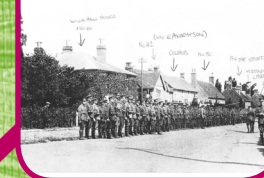
## 3 42 The Street E Avery and Son

E Avery and Son was the largest shop in the village and the Post Office. It sold groceries, and was also a corn dealer used locally by farmers and anyone rearing chickens. This is where many of the villagers would have registered their ration books in 1918.



## 4 Looking back down the street from number 30, The Street

The 4th Battalion the South Lancashire Regiment, lined up for inspection in October/November 1914. These men were digging a trench by the Royal Military Canal and were billeted with families in Appledore, 2 and 3 to a home.



## 5 22 The Street - site Forstal Hall

22, The Street, is the site of Forstal Hall which was the home of Ian Millar, who initially served in the Royal East Kent Mounted Rifles but transferred to the 6th Battalion Royal Irish Rifles. Married to Willamina he was only 19 when he died of wounds in Greece on the 30th September 1916. Ian Millar is buried in Struma Cemetery Greece; reminding us that men from Appledore served worldwide.



## 11 Men of the Lancashire Regiment 1915

The Lancashire Regiment preparing to march off in 1914 - these men were only billeted briefly in the village but every home took at least one soldier. At the time there was no gas lighting in the village and so paraffin was used which would have been obtained from Avery's. Notice how little the skyline has altered in a century.



Hawthorn

B2080

The Street

Start here

## 7 Court Lodge Road

Lushington Cottage opposite Court Lodge was where Ben Carbis was billeted with the Johnson family. Their son Richard (b. 1891) served with the 4th Royal West Kent Regiment from the beginning of the War and survived. Next door a family of 11 Belgian refugees were living - they had lost everything when they fled from Ostend. Court Lodge was the home of Mr E Terry who lent his meadow to hold the village Peace Celebrations in July 1919.

Walking guidance for stop 8 - please take great care if you are going to walk to point 8, we do not recommend this for groups, or families - this is a very busy and narrow road with no footpath.



## 8 The Royal Military Canal

The Royal Military Canal had been in private hands before the War but was taken back into military hands and guns re-sited along its length. Near to the bridge was the trench being dug by the Lancashire Regiment and the bridge was also patrolled by Special Constables like Mr Johnson who would stop traffic to make sure passengers had a legitimate reason for being in the village. Looking to the left (behind the Church) you can still see an area used as a wharf to land boats.



## 6 8 The Street

Local history suggests that this was a convalescence hospital during the War, but it does not appear on any official lists - it is understood that wounded soldiers were moved on the Royal Military Canal and Lloyd George was a visitor. It was also a tea room at one time.

Walking guidance for stop 7 (Court Lodge Road): if you are going to walk down this road proceed with caution as there are no footpaths.



## 9 Appledore, St Peter and St Paul Church

Inside the church you will discover a Roll of Honour and an embroidered timeline which has a panel featuring the First World War. Mr Johnson of Lushington Cottages was a church warden and head bell ringer at the Church. In the graveyard there are 6 First World War graves commemorating local men.



## 10 The Swan

Due to regulations pub opening hours were shortened for the sale of intoxicating liquor although pubs were still allowed to open from 5.30 in the morning for the sale of food and non alcoholic drinks. If you bought a drink for anyone else you could be fined.



B2080

Ct Lodge Road

Military Road