



Appledore Flower Festival

‘Never a Dull Moment’



Appledore Church

August Bank Holiday Weekend

Sat 23rd August - 10am – 5.30pm

Sun 24th August – 12.30pm – 5.30pm

Mon 25th August – 10am – 5.30pm

**Home-made refreshments, live music & stalls
Art Exhibition & Children's Quiz – Free entry & parking
For more info: Donna 01233 758256**

**Appledore Parish Magazine
August 2025**

All editorial matter for publication in the **SEPTEMBER** magazine should be sent to: **appledoremagazine@hotmail.com**, **NOT LATER THAN THE TWENTIETH OF AUGUST**. Please provide copy to our email address, as above, preferably as a **Word file attachment**. **We are limited financially with colour printing, so preferably all files should be in black and white when possible.**

The Appledore Parish Magazine is produced, printed, collated and delivered by a number of villagers who kindly volunteer to take on these tasks. It is delivered free to every household in the village. This is unusual; the majority of village magazines carry a cover price of 50p or so. It is supported financially by advertisers and by one or two organisations, such as the Parish Council and the Parochial Church Council, which contribute towards the space that they regularly occupy. But it could not continue to exist without donations from private householders who, over the years and on a regular basis, have given us money to keep going.

Donations — Cash or Cheques (made payable to Appledore Parish Magazine) should be sent to: - Appledore Parish Magazine Accounts, c/o Brian Knight, Heathland House, The Heath, Appledore. TN26 2BB or by Bank Transfer to – Business Account Number 03213421 Sort Code 30-90-28.

We acknowledge donations in the magazine by name or anonymous, but not the amount. If you would like your name mentioned please tell us this when making a donation or inform the editor by email. Thank You.

This month an anonymous donation has been received. We really appreciate it. Thank you.



Advertising: e-mail — appledoremagazine@hotmail.com

A year's advertising (11 magazines) is £35 per 1/6th page. The magazine is delivered to 400 houses and is available to visitors via the Village Shop and church.

Letter From The Editor(s)

Good News! We have a new Editor for the Parish Magazine. We welcome Tina O'Reilly to the role. Some of you may already know her as she's been involved in various events and activities since she arrived in Appledore three years ago. We wish her well and we look forward to seeing what she brings to the role.

We are so glad to finally take a back seat though we will still be involved with the Magazine for now - you can't get rid of us that easily!

With regards,
Your EX (Temporary) Editors, Brian and Tessa xx

Hello Appledore!

It is an honour to follow Brian and Tessa. Their dedication and values are truly inspiring, not only with everything they have done with the Magazine but throughout the village.

I have always been made to feel very welcome and I hope by becoming part of the Magazine Team I can help you celebrate being someone very special.

*When you receive this month's copy we will have just had the **40th Appledore Car Rally**, which was well supported despite the downpours. By mid afternoon there was glorious sunshine and we could bask in it whilst enjoying listening to the rock band. Well done to The Recreation Ground Committee and volunteers for a good event.*

***The Flower Festival** is almost upon us - 23rd-25th August. We look forward to being wowed by the displays in church, the wonderful teas and cakes, the entertainment, the interesting stalls. We can only imagine the hard work behind the scenes for three days of merriment. Please go along, take friends and family, enjoy!*

*Then **The Village Show** takes place Saturday 6th September. Is this the year you win a rosette for your bakes, your wonkiest veg, your unique handicraft? Read more inside the month's Magazine.*

*All the best,
Tina O'Reilly, Editor
Tel: 01233 758475*

CONTENTS

How to Donate	2
Editorial	3
Who to Ask	4-5
Village Diary	6
Minister's Letter	7
Church Services	8-9
Church Rota	9
Church Flower Rota	10
Appledore Recreation Committee	10
Produce In The Porch	11
Summer Holiday Activity	11
Flower Festival (1 of 2)	12
Village Show	13
Parish Council Details	14
Ride and Stride	14
Ramblers Report	15 -16
Garden Society	16
Table Tennis	17
Yoga	17
Grapevine	18
Flower Festival (2 of 2)	19
Gusbourne Jobs	19
Appledore School Open Day	20
Appledore Parish Council	21
Rye Society of Artists	22
Kent Fire & Rescue Service	23 - 24
A Message from Katie Lam MP	25
Wendy Thomas	25
Montfort Manor	26
Colouring Competition Page	27
Advertising	

Still Required

Volunteer Magazine Collators

The Magazine is assembled, printed and collated during the fourth week of the month. Could you offer occasional or regular help for a couple of hours -

It's sociable and includes a refreshment break!

Email:

appledoremagazine@hotmail.com

WHO TO ASK

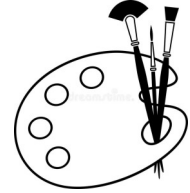
APPLEDORE ALLOTMENT CHARITY. Contact Iain Ramsden appledoreac@gmail.com 07979 804079			
APPLEDORE PARISH CHURCH. Revd.Can. Lindsay Hammond 01580 761591 or 07805 840493			
	Revd.Jeanette Kennett		01233 758250 or 07888 998874
Secretary	Philippa Perkins.	philippaperkins.appledorepcc@yahoo.com	
Churchwarden	Mr. Chris Self		01233 758078
Church Bells – Captain	Mr. F. Wenham, Lindon, Stone.		01233 758362
Secretary	Denise Stephens, Nonsuch Cottage.		01233 758952
Steeple Keeper	Mr. Aston Calladine		01233 758105
Flowers/Brass	Mrs. J. Clifton, Priory Lands.		01233 758285
Refreshments/Safeguarding	Mrs. D. Clifton		01233 758256
METHODIST CONGREGATION. Mrs. B. Fazzani, Oakhouse Farm. 01233 758322			
APPLEDORE & DISTRICT RIDING ASSOCIATION			
Chair	Mrs. Sue Hutcheson		07795 957488
APPLEDORE VILLAGE STORES 51/53 The Street. 01233 758320			
ASHFORD BOROUGH COUNCILLOR Mr. Johnny Shilton Johnny.Shilton@ashford.gov.uk			
ASHFORD BOROUGH CITIZENS ADVICE ashfordadvice@gmail.com			
ART CLUB	Denise Stephens	georginajack@icloud.com	07752 969184
APPLEDORE GARDEN SOCIETY	Chair	Helen Sloman	07968 836603
	Joint Secretaries	Tina O'Reilly	01233 758475
		Jo Weeks	01233 758420
APPLEDORE LOCAL HISTORY SOCIETY Chair Brian Knight 01233 758319			
	Secretary		alhskent@gmail.com
APPLEDORE FOOTBALL CLUB appledoresundayfc@gmail.com			
	Secretary	Dean Clark	07737 337976
	Treasurer	Tom Missing	07584 859269
	Manager	Scot Tippet	07935 729609
BRITISH RED CROSS For general enquiries 01580 763359			
Tenterden & Cranbrook For medical loans specifically 01233 620356			
CARM: Meeting Point			
Referrals	Helen Mattock		01233 758122
COMMUNITY RURAL WARDEN Joanna Vos joanna.vos@kent.gov.uk 07980 770578			
CITIZENS ADVICE BUREAU Town Hall, Tenterden 01580 762371			
Monday 10.00 – 1600, Tues, Weds, Thurs, Fri. 10.00 – 13.00.			
DEPARTMENT OF SOCIAL SECURITY Ashford 01233 208000			
DOCTORS	Hamstreet Surgery		01233 730190
	Tenterden Surgery		01580 763666
	Woodchurch Surgery		01233 860236
ELECTRICITY Failure of supply UK Power Networks 105			
FRIENDS OF APPLEDORE CHURCH Chair Mrs. F. Smith fmks33@gmail.com			

FRIENDS OF APPLEDORE STATION	Chair	T.W.D. Blaney.	The Wish House.	01233 758628 or 07710 637962
HOSPITALS	Buckland (Dover)			01304 201624
	William Harvey (Ashford)			01233 633331
	Kent & Canterbury (Canterbury)			01227 766877
	Benenden			01580 240333
	West View (Tenterden)			01580 261500
KENT COUNTY COUNCILLOR	tba			
MEMBER OF PARLIAMENT	Katie Lam	katie.lam.mp@parliament.uk		01580 388344
PARISH COUNCIL	Chair	Roger Hiskey		01233 758097
	Parish Clerk	Steve McIntyre	enquiries.apc@gmail.com	
PARISH MAGAZINE	Editor	Tina O'Reilly		01233 758475
	Accounts	Vacancy		
	Advertising	appledoremagazine@hotmail.com		
POLICE	Emergencies			999
	Non-Emergencies			101
PCSO	Kate Richards	katherine.richards@kent.pnn.police.uk		
RAMBLERS	Jo Weeks			07949 357459
RECREATION GROUND BOOKINGS	TBA			
REFUSE COLLECTION	For collection items contact:-			01233 331111
TAXI	Small Hythe Cars			01580 762444
TENTERDEN & DISTRICT DAY CENTRE	Church Road, Tenterden			01580 762882
TENTERDEN COMMUNITY HUB	tenterdencommunityhub@gmail.com			01580 389941
TRAINS	Enquiries			08457 484950
VETS	Cinque Ports Veterinary Group	www.cinqueportsvets.co.uk	Tenterden	01580 763309
			Rye	01797 222265
	Pierson Stewart & Partners	www.pspvets.co.uk	Tenterden	01580 765244
			Cranbrook	01580 713381
VILLAGE HALL		villagehallappledore@gmail.com		
	Committee Chair	Derek Winter		01233 758570
	Bookings	Marilyn Ray		01233 758586
	Hospitality Advisor	Linda Hiskey		01233 758097
WATER COMPANY	South East Water	Customer and Emergency Service		03330 000365
WITTERSHAM C.E.P. SCHOOL	www.wittersham.kent.sch.uk			01797 270329

24/07/2025

Appledore Village Hall Diary – August 2025

Monday	Baby Class Yoga & Sensory 1pm – 2pm (Small Hall)
Monday	Pregnancy Yoga 7.30pm – 8.30pm (Small Hall)
Monday	Aerobics 6.15pm - 7pm
Tuesday	Hamstreet Surgery Prescription Collection 10.15 - 10.45am
Tuesday	Art Class 1pm - 4pm
Wednesday	Baby Massage Class 12pm - 2pm (Small Hall)
Wednesday	Aerobics 6.15pm - 7pm
Wednesday	Lindyfit 7.30pm – 9pm
Thursday	Pilates 9.45am - 10.45am
Thursday	Citizens Advice - By Appointment
Friday	Tai Chi 10.15am - 11am



Other Appledore Events - August 2025 - Venues as listed

Saturday 2nd August	Cake Bakes, Church Porch 9.30am
Monday 4 th August	Appledore Parish Council Meeting 7.30pm – 9pm Main Hall, Village Hall
Saturday 9 th August	Baby Event 9am – 5pm, Village Hall
Tuesday 12 th August	CARM 10am – 11.45am, Village Hall
Saturday 23rd to Monday 25th August	Appledore Flower Festival, St Peter and St Paul's Church & Church Grounds
Sunday 24 th August	Food and Artisan Market 10am – 1pm, Village Hall
Tuesday 26 th August	CARM 10am – 11.45am, Village Hall
Tuesday 26th August	Appledore Recreation Ground Management Committee Mid-Term Meeting 7.30pm Sports Pavilion
Friday 29th August	Appledore Garden Society Visit to Dean House & Gardens, Newchurch
Saturday 6 th September	Village Show, Village Hall - Open to the public from 2pm, Presentation of Trophies 4pm, Raffle at 4.30pm
Monday 8th September	Evie's Yoga Class - Village Hall 7.30-8.30pm (New)

Please Note

- ***There will be No Monday Baby Class's 1pm – 2pm through July & August***
- ***There will be no Village Ramble in August***

Minister's Letter

My introduction to village life was time spent every summer with my Granny in Five Ashes. That would have been in the early fifties. And that is where I get all my reference points for what constitutes a village fête. One of the essential ingredients was bowling for the pig. It was a serious business. A pig was worth winning.

It was obvious to me that Newenden Fun Day should have bowling for a pig as one of the attractions, even though the prize would be appropriately pig-themed rather than a genuine squealer. Then I found myself explaining the concept to a bemused planning team. Really? A live pig you took home? What did you do with it? Why would anyone want that? Pig bowling was replaced with splat the rat.

These days I measure the passing of time by the number of, for me, commonplace things I have to explain: a seventy-eight, pressing button B, asking the operator, early closing day, the list could go on. The answer is that I happen to be living through a time when continuous rapid change has become the norm.

This is a time when the human ability to communicate and cooperate across the world has enabled us to develop the means of exploring our tiny bit of the vastness of space.

Let's take just one very recent discovery reported in the press on July 3rd: According to Nasa the largest inter stellar visitor ever detected was first spotted on 1 July, by a telescope in Chile. It has been named 31/ATLAS. It originated from outside the Milky Way, is estimated to be towards twice as old as our solar system and is just passing through.

We humans have always been fascinated by the heavens. The vastness, the activity, sometimes random, like the appearance of 31/ATLAS, but more often regular and observed, leading to all those stone circles aligned to the summer and winter solstices. More remarkable are the hidden alignments, like the Newgrange tomb in County Meath, a passage tomb within a circular mound so designed that a beam of sunlight from the winter solstice sunrise enters through an opening above the entrance and illuminates the chamber for about 17 minutes each year*.

The fascination can take on a significance, can become an awareness of a presence that remains forever a mystery, a presence that can be classified as divine, a presence we call God. I give you some lines from one of those really old songs we call the Psalms, where the poet is addressing God:

When I look at your heavens, the work of your fingers,
the moon and the stars that you have established;
what are human beings that you are mindful of them,
mortals that you care for them?

(Psalm 8: verses 3,4)

Trying to date an individual psalm is never easy but we can safely say these words come from somewhere between 1750 and 400 BCE.

However long ago those words were first sung, today, as we ponder the fleeting visit of 31/ATLAS, that question is still there. Put colloquially we could ask:

Why do you bother with us? Why take a second look our way?

And with some reflection we might get to asking:

What part are we to play in your amazing creation?

If your August includes taking time out, maybe you can take some time to gaze up at the night sky and ponder those questions.

God bless

Judy V

* Want to know more about Newgrange? https://www.newgrange.com/winter_solstice.htm

THE CHURCH OF ENGLAND IN TENTERDEN, ROTHER AND OXNEY

We are a group of churches covering Appledore, Ebony, Newenden, Rolvenden, Smallhythe, St Michael's, Stone, Tenterden and Wittersham.

SERVICES IN CHURCH AND ONLINE DURING AUGUST

Beginning the Day with God, a ten-minute reflective service, will be *online only* from Monday to Saturday.

Ending the Day with God, a ten-minute reflective service, will be *online only* from Monday to Saturday.

Tenterden Church will be closed for refurbishment until the end of July 2025. Services that would normally take place in St Mildred's will be held in Tenterden Church Hall opposite the church.

Holy Communion will be celebrated in St Michael's Church every Wednesday and in Tenterden Church Hall every Thursday, both at 10am. Both celebrations will last about twenty-five minutes. These services won't appear online.

To access our daily online worship, visit:

YouTube

St Mildred's, Tenterden

[Online services can also be accessed through our free daily bulletin, *Connect Up!*](#)

To receive *Connect Up!* please visit our website, www.tentroxchurches.co.uk and subscribe.

- **LS** below denotes a service which will be live streamed and then available on the St Mildred's YouTube channel.

Sunday 3rd August **The Seventh Sunday after Trinity**

11am Morning Praise (*Appledore Church*)
6pm Evensong (*Stone Church*)

Sunday 10th August **The Eighth Sunday after Trinity**

11am Lammas Eucharist (*Appledore Church*)

Sunday 17th August **The Ninth Sunday after Trinity**

11am Celtic Morning Prayer (*Appledore Church*)
6pm Summer Celebration (*Stone Church*)

Continued overleaf

... continued from previous page

Sunday 24th August
The Feast of St Bartholomew the Apostle

11am Flower Festival Service (*Appledore Church*)

Sunday 31st August
The Eleventh Sunday after Trinity

11am Celtic Morning Prayer (*Appledore Church*)
6pm Churches Together Service (*Zion Baptist Church, Tenterden*)

For information re Baptisms, Banns and Weddings, Funerals and other pastoral concerns,
 please contact Rev. Canon Lindsay Hammond
 01580 761591 / 07805 840493 / teamrector@tentrox.org
 or Rev. Jeannette Kennett
 758250 / 07888 998874 / caulkhead7@talktalk.net
 For practical matters, please contact Church Warden
 Chris Self 758078 / chris.self45@gmail.com

Appledore August Church Rota 2025

Date	Sides person	Reader/ Intercessor	Refreshments
3rd August	Donna	Vicki / Brenda	Brenda/ Eileen
10th August	Judith	Roger P /Frances	Jo
17th August Chris & Donna leading	Jo	Michael/ Helen	Fay/ Eileen
24th August	Clive	Mayor / Tony	FF rota applies
31st August	Helen	Jane/ Donna	Donna

CHURCH FLOWER ROTA AUGUST 2025

	ALTAR	WEST END	PORCH
Aug. 3 rd	Fay Steed	Carly Amey	Donna Clifton
Aug. 10 th	Denise Stevens	Helen Hennig	Judith Clifton
Aug. 17 th	Sally Linington	Frances Smith	Judith Clifton
Aug. 24 th	FLOWER FESTIVAL		
Aug. 31 st	Flower Festival Leftovers		
Sept. 7 th	Julie Wooding	Wendy Selmes	Donna Clifton

Horne Chapel: Judith Clifton

If you are unable to take your turn please telephone Judith on 701233 58285 or text 07840 356681 – and the same numbers if you are unable to crack the code for the kitchen/Glory Hole for oasis etc. Please take the old flowers home with you or place in the black bin at church (not the green recycling one). Would you like to join us on the flower rota, we would love some extra helping hands? If so please contact me on the above number.

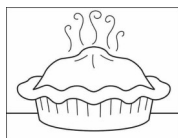
J.C.

Appledore Recreation Ground Management Committee Mid-Term Meeting

**This meeting is open to committee
members and the public.**

**It will be held at the Pavilion on
26th August 2025 at 7.30pm**

PRODUCE IN THE PORCH



Thanks to everyone who leaves used jam jars, flower pots, plastic trays, books and knitting wool in the church porch. We gratefully use them all and hope you will please continue to donate in this way

Our next Cake Bake Day will be on Saturday 2nd August 9.30 and the first Saturdays of subsequent months. Come any earlier and you may not always find that the sausage rolls have arrived as they are too hot to package!

If you feel the urge to make a cake / cookies/ bread / savouries please contact either Judith (01233 758285) or Donna (01233 758256) who would be delighted to hear from you. As always every item (and ingredient) for sale is donated so all proceeds go directly towards the upkeep of our beautiful church.

The porch is open every day from 9.00 am until late afternoon where you will find our usual range of preserves, books, plants, flowers and other desirables. However, please note that opening time on cake bake day is 9.30 to enable us to set up and for the freshly cooked goodies to cool down!



Looking for somewhere to visit with the Children or Grandchildren during the holiday, then why not visit Ashford International Model Railway Education Centre (AIMREC) based in Bethersden near Ashford. We display and operate a range of model railway layouts alongside a collection of railway and model railway memorabilia and operate a 5 inch miniature railway "The Spitfire Line".

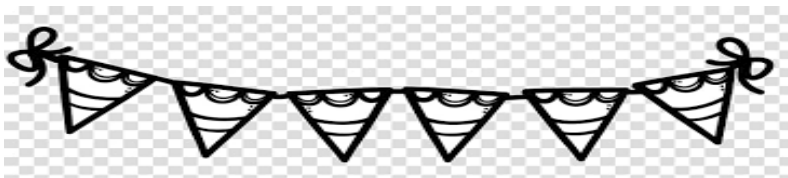
You can see the winning layouts from the 2019 series of Channel 5's Great Model Railway Challenge (GMRC) in action alongside examples of other model railways in different scales and sizes and some special displays linked to railways and the hobby.

We sell a range of new and second hand items for modellers and serve home-made refreshments. We are fully accessible with toilets and car parking.

Your visit supports our charitable work to preserve and display heritage model railways and to provide educational and personal development opportunities, particularly for people on the autism spectrum.

We are open from 10.30am to 4.00pm on Thursdays, Fridays and Saturdays throughout August located at Unit 2, Mill Farm Business Units, Fridd Lane, Bethersden. TN26 3DB

Appledore Flower Festival 2025



‘Never a dull moment’

As I write this, we are fast approaching our annual Flower Festival.

Our theme this year is hobbies and recreational activities, including leisurely past-times, sports and fun pursuits.

Preparations are in full swing – advertising in local parish magazines and on social media is complete, posters and flyers are being distributed around the county and our arrangers are planning how they are going to interpret their allocated station (I hope!).

As always, we are still in need of help with manning stalls, baking, serving refreshments, and stewarding in church.

Please ring me on the number below if you are happy to volunteer.



Posy & lavender bag sellers wanted

Are you able to spare an hour or two of your time and would like to be part of our team of posy/ lavender bag sellers?

We provide baskets, money pots and sashes for our sellers.

Everyone is welcome to take part and it's great fun!



Refreshments/ Cakes & Produce/ Ancient & Modern/ New Toy Stall

We are looking for home-made cakes, savouries & produce for the refreshments & Cake stalls, bric-a-brac for the Ancient & Modern stall, books, journals & maps for the Book Stall and ride-ons, games, toys & books for the new Children's stall (all in reasonable/ good condition please).

If you are having a clear out, please ring me on the number below and I will happily collect from you. Alternatively, there is a large area under the stairs in the church porch where you can drop off your donations.

Sponsorship

We would like to extend a very big thank you to all the businesses that have kindly responded to our request for sponsorship. If, however you have not been approached and are interested in donating to the cost of flowers or to sponsor a specific arrangement, please contact Mrs. Vicki Self on 758078. In return, we will advertise your business in our visitor leaflet that goes out to approx 1,200 visitors, on cards on the individual arrangements and in our Parish magazine.

Thank You,

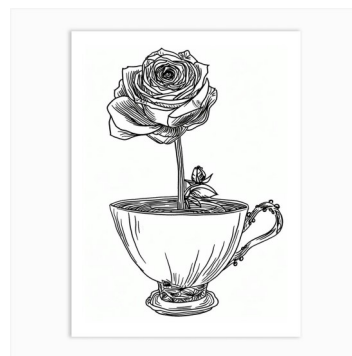
Donna Clifton (01233 758256)



Appledore Village Show

6th September 2025

The annual Village Show is almost upon us. Please find your schedule inserted inside this magazine along with the colouring sheet for class 39 in the children's section. Obviously the weather has been quite a challenge this year for the vegetable growers due to the lack of rain, but hopefully some of you are watering your produce and able to enter some of the fruit and vegetable classes.



The flower arrangements are a V.E. Day arrangement, an arrangement to include Footwear, A Something Old, Something New arrangement, an arrangement in a cup and saucer and as always the Miniature arrangement.

The cookery classes include cheese scones, a white loaf of bread, a Victoria Sandwich, chocolate brownies and for the men only two Cornish Pasties.

From the children we would like an animal made from fruit and vegetables, a homemade Halloween card, three butterfly cakes and the colouring sheet.

We have several classes for the 'crafters' amongst you including items of embroidery, tapestry or stitch work, knitting and crochet and any other handicraft item. From the artists we would like a 'My Favourite Place' painting and an illustrated poem.

Photographers – your classes are 'Dawn or Dusk' and 'In my Garden'.

In true Appledore style refreshments will of course be available at the Show but any offers of cakes would be very welcome. We will also be holding a raffle to help fund the Show, so any raffle prizes would be gratefully received and we are happy to collect them if it's easier.

Please polish and return cups won last year by 26th August to Jo Weeks, or again I am happy to collect. Details of how to enter and the rules are on the schedule but any problems please do not hesitate to ring me. I look forward to all your entries – let's make it a Show Ruth would have been proud of!

Jo Weeks

Telephone: 01233 758420 / 07949 357459



shutterstock.com • 356601023

Parish Council Contact Details

Roger Hiskey (Chairman)	01233 758097	apc.rhiskey@gmail.com
Paula Thornton	07557553626	apc.pthornton@gmail.com
Gary Kinsley	07565 504629	apc.gkinsley@gmail.com contact by messaging welcomed
Sharon Marsh		apc.smarsh@gmail.com
Chester Lusk	07939531014	apc.clusk@gmail.com Contact by What's App welcomed
Kevin Nicol		apc.knicol@gmail.com
Roger Kimber	01580 493576	apc.rkimber@gmail.com
Parish Clerk Steve McIntyre		enquiries.apc@gmail.com



Ride + Stride for Kent Churches

Saturday 13 September

This event is arranged by the Friends of Kent Churches. Half of the funds raised go directly to our own church in Appledore and half go towards providing grant monies to any Kent church in need.

So, please consider supporting it by collecting sponsorship to cycle or walk on the day. We also need help in the church with refreshments or to man the desk and greet cyclists.

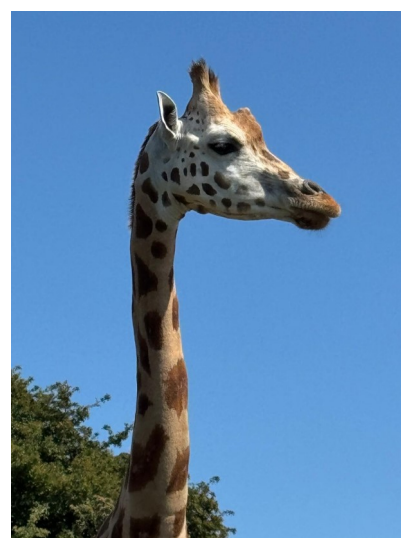
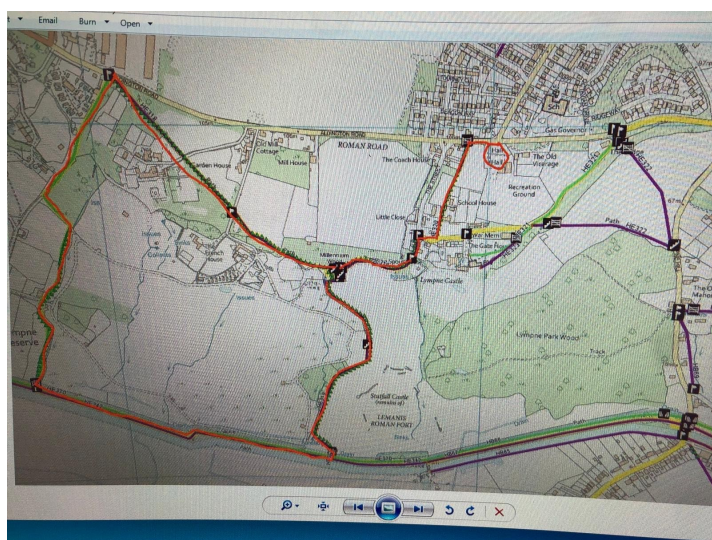
Having cycled this for years now, I can thoroughly recommend it. You can choose your own route and cycle to as many (or as few) churches as you wish where you are sure to find a warm welcome, lovely refreshments and like-minded people along the way.

For further information or a form to take part, please contact Fay on 01233 758304.

Thank you.

The Ramblers Walk 18th July 2025

Well it's ramble day again and as it's Summer we have our passports packed and are going on Safari!!! We meet at Appledore Rec. and then drive to Lypne Village Hall where we park. We are pleased to welcome Helen to our group and 10 of us leave Lypne car park, crossing the road before turning left. After about 30 metres we cross back over the road and go through a beautiful old fashioned metal gate – this is footpath HE 320 going towards Lypne Castle. This is a proper tarmac path and we follow it along until it comes out on a small road that goes up to the Castle. We turn right and then left at a house that in the past must have been a village store. We are now on footpath HE 318 which goes along the edge of a wood. To our left are the most amazing views as we are very high up and can see all over the marsh to the sea, which looks very blue in the distance. We pick out the Military Canal meandering through the middle of the scene and can see Dungeness Power Station to the right. Also nestling on the hillside are the ruins of Stutfall Castle which was a Roman Saxon Shore Fort in 275 AD.



We carry on and take a left fork on to HE 319. This part of the ramble is not easy, being a steep narrow downward path with a fence on one side and overgrown hedge on the other. On the recce we had done a lot of cutting back, but in a week the brambles had again taken over! We help each other along and I can see everyone thinking “why has she chosen this route?!” Eventually we reach a bridge at the bottom that comes out on a proper hard path HE 370. We turn right and this footpath runs parallel to the Military Canal. As we walk along we look to our right and enjoy views over the Port Lypne Reserve. In the distance we can see giraffes and antelope and the safari lodges that you can stay in overnight. After about half a mile we take a right turn over another bridge and start the long climb back up to the top of the hill. The hill is very steep and the sun is beating down on us and we stop regularly to catch our breath! Brenda worries me as she jokes she is glad she got the doctors to turn up the rate of her pacemaker!!! About half way up the hill we are rewarded as the path, although fenced off, runs through the middle of the giraffe enclosure and 3 absolutely beautiful huge giraffes are standing looking at us! We all just stand and take in this amazing scene and everyone agrees how special this is. Eventually a safari bus comes along carrying fee paying guests and the giraffes forget about us and follow the bus.

Continued overleaf....

...continued from page before

We carry on up the hill going higher and higher and getting hotter and hotter as the weather has suddenly gone very humid. We pass other animal pens and pick out big eared wild dogs resting under trees, antelope sunbathing on the hillside and warthogs dozing tail to tail in the shade. The path carries on up and some of us are starting to struggle. Finally we are in shade under trees which is very welcome. On our left is a monkey enclosure and tiny monkeys swing back and forth entertaining us. We finally reach the top and take a right turn back on to HE 318. This is a nice cool path under shade and we follow this all the way back to the Castle path where we started. The path passes a lovely mediterranean style pub that is part of Lympne Castle. It has a beautiful courtyard with olive trees and tables and chairs, we order drinks and then sit and discuss our amazing ramble. There is quite a lot of banter about this walk being one of our most difficult as far as vegetation and steep hills and how it was something of an initiation for our newest member Helen, who now has a big tear in her shirt!! However the amazing giraffes have made it all worthwhile and we certainly wouldn't have seen these in Appledore! We finish our drinks and retrace our steps back to Lympne Village Hall and then home.

There will be no ramble in August as we are on our hols!! Back again on 19th September 2025.
Jo Weeks



Appledore Garden Society

Friday 29th August. Visit to Dean House and Gardens, Newchurch. A garden created over 25 years, from an old farmyard, featuring mature trees, shady areas, wildlife pond, secluded seating areas, sun-drenched gravel beds and herbaceous borders designed for pollinators. Extensive views over Romney Marsh. Large collection of cacti and succulents. Visitors can also see a rewilding project in it's infancy.

Friday September 26th Church House and West Court Lodge, Postling near Hythe.
More details next month.

For any more information on all events or about joining our friendly bunch please email the Secretaries of the Appledore Garden Society, Tina O'Reilly and Jo Weeks on appledoregardensociety@gmail.com or call Tina on 01233 758475 or Jo on 01233 758420



Anyone For Table Tennis?



A small number of villagers have expressed an interest in forming a table tennis club for those who live in and around Appledore and are over 18 years of age, for recreational/social purposes. It is proposed that the club would meet at the Village Hall, possibly once or twice a week depending upon the level of demand. If this is also of interest to you would you please make contact with Alan Birch so that the level of interest can be gauged prior to proceeding and committing to the purchase of equipment etc.

Contact details are as follows:- alanross22@icloud.com or mobile 07496 883744



Appledore Village Hall
Yoga Classes
Starting Monday 8th September 2025
From 7.30pm – 8.30pm
With Evie Banfield

Find balance and ease in our Gentle Flow Yoga class – a harmonious blend of fluid movement and mindful breath. Designed for all levels, this soothing practice allows you to move at a comfortable pace, linking gentle poses with deep, intentional breathing.

Through soft transitions and supportive sequences, you'll improve mobility, release tension and build a sense of inner calm. Expect a nurturing space, guided relaxation and a flow that feels as refreshing as it is grounding.

Perfect for beginners, those returning to yoga or anyone seeking a low-impact yet uplifting experience. Come flow with-us leave feeling renewed, centered and energised.



GRAPEVINE : AUGUST 2025

In this time of bionic wonderment and medical skills it is becoming ever more common to have replacements for much of our ageing joints. Grapevine has been aware of several incidents within our own village, over the past months/years, and wish all those affected speedy recoveries, and that those procedures carried out a while ago are now just a distant memory.

Due to his commitment to the parish magazine Grapevine takes this opportunity of sending best wishes to Brian (Knight) who has just undergone a full knee replacement. Now hopefully Brian can step back (when the leg allows!) and take a well earned rest, and we thank him for all the work carried out over the years.

Brian has requested that his grateful thanks be extended to all those who have so generously offered assistance to both him and Tessa, and to those who have readily helped in transporting him to and from the hospital over the past days.

We're delighted to see new items in the play area at The Recreation Ground. Several times we've seen little children playing 'house' or being pushed on the new swings. How lovely to see the play area more usable again.

Within this month's edition is an advert from a resident for an item for sale. If you have anything you would like to advertise please let us know. There is no charge to residents for this service. It used to come under the banner of 'Market Place' and was a successful way of selling those no longer required/redundant items. Send details into the magazine via appledoremagazine@hotmail.com and include photos if available. Don't forget – deadline for insertion is by the 20th of every month.

Whilst we are not aware of any events taking place in the day to mark VJ Day – we do know that the Beacon is to be lit on the evening of VJ Day on Friday 15th August.



FOR SALE
BISTRO RED PATIO GARDEN SET -
BRAND NEW - NEVER USED

ROUND TABLE AND TWO FOLDING
CHAIRS

£45.00

ENQUIRIES : TEL: 01233 758583

Flower Festival - We Still Need

Do you have any unwanted and unopened toiletries and cosmetics? If so please may we have them as an added attraction at the Flower Festival stall. Also if you are able to knit, sew, paint, crochet, or any other craft please would you consider making something for us to sell no matter how small (or indeed large!) I can collect if you wish.

.....

Are you cutting down your lavender any day soon? If you don't want it we do please!

Every year we produce around 300 lavender bags for the Flower Festival and the sooner we can start the better as we need to dry it and strip it before stuffing the bags all before August 23rd. No pressure!!!

I am happy to collect if you call me on 01233 758285

Thanks for your support.

Judith Clifton



GUSBOURNE

WE'RE HIRING

We are looking for keen, enthusiastic and reliable individuals to join our grape picking team at our Kent vineyard (TN26 2BE).

Harvest usually commences around late September - weather dependent.

Duration: Approx. 12 working days over a three-week period including weekends.

Working day: 8am - 4:30pm. Finish time may fluctuate.

Pay: £12.21 p/h plus holiday pay.

For more information and to discuss please contact:

Jackie Kelly

07425 841409

harvest@gusbourne.com



OPEN DAY

APPLEDORE SCHOOL (1519 – 1991)

27TH SEPTEMBER 2025
11:00 AM TO 2:00 PM

APPLEDORE VILLAGE HALL
ENTRY IS FREE

Were you a pupil, or were your
parents or grandparents pupils?

Come along and see the information
we've gathered and the booklet
we've produced

Meet ex pupils and share your stories



APPLEDORE PARISH COUNCIL



<https://www.appledoreparishcouncil.gov.uk>

Keeping the Community Safe



Community Speedwatch is a national initiative where proactive members of local communities join, with the support and supervision of their local police, to record details of speeding vehicles, using approved detection devices.

Registered keepers of vehicles exceeding the speed limit are contacted initially with a letter explaining the potential risks and consequences of their dangerous behaviour. Repeat offenders will receive a visit from local police, irrespective of where they live.

Beyond these friendly gestures, focused enforcement and criminal prosecution may follow based on collated evidence. Want to join the Speedwatch Team? If so, contact Roger Hiskey 01233 758097.

Other News

Car Park Lighting: APC are working with the Appledore Village Hall Committee to identify lighting options to improve safety in the Village Hall Car Park. Contact enquiries.apc@gmail.com for more information.

5 Sandpiper Close: APC are considering the options presented by Ashford Borough Council concerning the rental of the "Affordable house" in Sandpiper Close. More information will become available in due course.

Community Policing: Subject to urgent response requirements, Darren Laker, Community Policing Officer, is planning to attend APC's next meeting on 4th August 2025, 19:30 at the Village Hall. This is a great opportunity to raise questions in relation to crime impacting Appledore residents.

Play Park: The first new play toy and picnic benches have been erected in Appledore Recreation Ground Play Park. This is the start of a Play Park upgrade for the benefit of local children.



Karl Terry Dune shadow
Oil on board

2-25 August 2025

The Dance Hall
Community Centre
Conduit Hill, Rye TN31 7LE
Open daily 10.30am to 5.00pm

www.ryesocietyofartists.co.uk





Have your say on how KFRS supports and protects rural communities

08 July 2025

Kent Fire and Rescue Service (KFRS) is inviting people across the county to give their views on its forward plans to protect rural residents and businesses. The consultation closes on 1 October 2025.

Public, Service development

From today (8 July 2025), people across Kent and Medway are being invited to have their say on Kent Fire and Rescue Service's (KFRS) forward plans to protect rural residents and businesses from the risk of fire or other emergencies.

And with around 85% of the county classed as rural, it's important to give your views.

The plan outlines how KFRS already supports people who live and work in the countryside, and how the service intends to enhance its response to risks associated with rural living.

The proposal also considers the relocation of a water rescue vehicle.

The rural plan has been approved by the Kent and Medway Fire and Rescue Authority - the body that governs KFRS and is now open for public consultation.

People have until 1 October 2025 to take part here: [Public consultation 2025 Survey](#)

Helping rural communities to prepare, act and protect

Rural homes and businesses face unique risks, including timber-framed buildings, thatched roofs, isolated properties, mobile homes, wildfires, and limited water supplies.

To help alleviate these hazards and reduce the chance of a fire or other emergency, KFRS' rural plan aims to support people in rural communities to prepare, act and protect themselves, by:

Prepare – Helping you to understand the risks in rural areas and provide you with guidance and advice on how to stay safe.

Protect – Protecting you and your home in times of need.

To achieve this over the next four years, KFRS is proposing a number of targeted prevention and protection activities, including:

Positioning dedicated wildfire response teams at key locations, with the right vehicles and equipment to reach incidents in difficult rural areas quickly and safely.

Continued overleaf ...

... continued from previous page

Working with local people, landowners and other organisations to manage green spaces, helping to stop fires from reaching homes and businesses.

Work with farming and local community groups to increase awareness of fire safety issues

Helping people to prepare for and recover from emergencies within rural communities.

Exploring ways to recruit more on-call firefighters for daytime shifts, and how they can offer more local support.

Increase our business engagement, working with small business groups and rural organisations, to improve awareness of building safety legislation and responsibilities for business owners.

“Reflect the ever-changing needs of our rural communities”

KFRS Chief Executive Ann Millington said: “To help us provide the very best service, it’s important to identify the unique risks associated with living and working in small towns and villages.

“We want to ensure the support we deliver reflects the ever-changing needs of the people we serve across Kent and Medway.

“And with one in three people living in rural areas, it’s vital we have your views on our proposed plans to enhance our operational response and prevention work.”

Many people living in the countryside are in isolated locations, with some residents who might not have access to the internet.

Ann added: “To help us reach as many people as possible, we’re asking everyone to share the link to our survey.

“Or, if you know of someone who doesn’t have access to the internet, please pop by and help them to give their views.”

Take part in the survey today, go to – <https://eu.surveymonkey.com/r/kfrspublicconsultation2025>

An update from Katie Lam MP

As everyone in the Weald gears up for garden parties, village fêtes, strawberries and cream – and perhaps a glass (or two) of English wine for the more indulgent among us – it feels like summer is finally here.

Come rain or shine, it's been another busy few weeks both in Parliament and across the constituency. It's a real privilege to meet so many people quietly doing extraordinary things.

I've had a great time visiting various primary schools over the last few months. It seems like everywhere I go the enthusiasm of the pupils and dedication of the staff are clear to see. I want to visit every school in the Weald, so if I owe you a visit please get in touch. I usually speak a bit about being an MP and answer any questions about my role, our political system and public service more generally.

It was a pleasure to join the Big Cat Sanctuary's 25th anniversary festivities in Headcorn. A bit different from the farm animals I usually meet – but just as impressive! A big thank you to the Managing Director Cam Whitlock for showing me around. It's a brilliant day out.

In Westminster, I was joined last month by some fantastic work experience students: Imogen, Alex, and Perla. It was encouraging to see such switched-on, engaged young people asking thoughtful questions and sharing their ideas. They also had the opportunity to ask me whatever they wanted, from how I got my start in politics to my dog Bailey's favourite activity!

I'm always on the lookout for young people interested in politics. This summer, I have a great group doing voluntary placements in my Campaign Office in Tenterden. This role would suit someone keen to gain hands-on experience in a political office and on the campaign trail.

You can join me for any or all of July, August, and September. If you, or anyone you know, might be interested, please get in touch with my Campaign Manager Alex at campaigns@katieforkent.com as soon as possible.

And finally, I was proud to speak up in Westminster for English wine production, in the middle of English Wine Week. Kent's vineyards are world-class, and I'll keep pushing for the recognition and support they deserve. I hope you'll join me in supporting our Kentish producers over the summer by buying local wherever possible!

Wendy Thomas

To celebrate the life of Rosalynne 'Wendy' Thomas formerly of Cobblestone Cottage, 33 The Street, Appledore the family are hosting a celebration of her life at The Ferry Inn on Thursday 4th September from 3pm.

Many of you will already be aware but 'Wendy' passed away on 15th June 2025 aged 78 at Pilgrims Hospice, Ashford following a 2 year battle with cancer. She absolutely adored the village of Appledore and the people in it and whilst her illness forced a brief move to Danemore in Tenterden in 2023 she retained many friends from her 12 years of living in the cottage she loved.

It was her wish to pass with the minimum of fuss and as such she opted for a 'plan' in her final weeks in lieu of a formal funeral but the family hope the above celebration of her life will be an opportunity for friends and family to gather to remember this kind hearted and generous woman who was many things to many people but most importantly the best mother I could wish for. If you are minded and able any donations of whatever you can spare would be very much appreciated to Pilgrims Hospices in lieu of flowers and cards.

Andy (Andrew) Thomas (Son)



Experts in
care for
40 years

Over 9,000 families enjoy peace of mind knowing their loved ones are expertly cared for, with support that's bespoke to their unique needs.

If you're considering a care home,
call **01233 438749** or visit
careuk.com/montfort-manor

Inspected and rated



Trusted to care

Montfort Manor care home
Ashford

care UK

