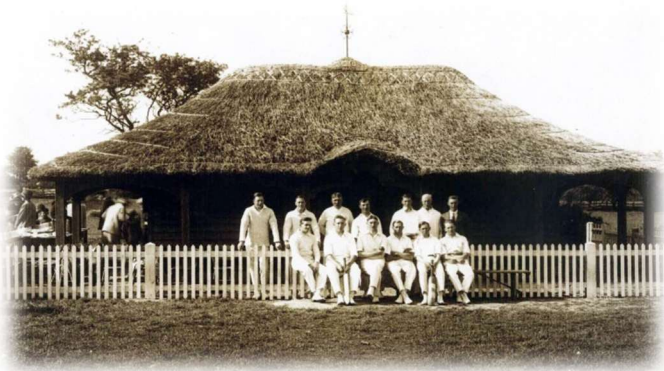




Appledore Archive

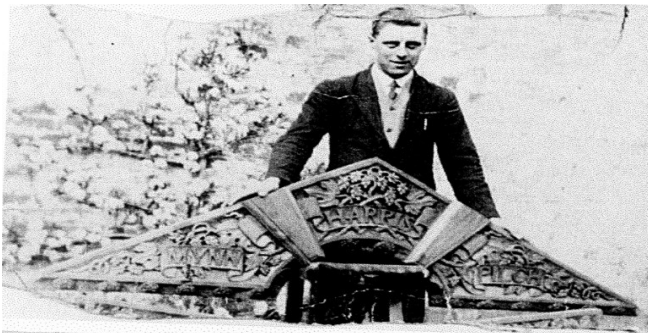
Memories and Milestones from Appledore's Past

The Old Cricket Pavilion



In 1925, a pavilion was built on land lent to the village for a sports field by Mr E. B. Terry of Appledore. The pavilion was officially opened by Miss Humphry of The Forstal, Appledore. It stood on the north side of the field and had a thatched roof with an ornate weather vane on top.

Around the veranda, the roof was supported by wooden posts decorated with carved corner panels. Each carving showed the name of a Kent County Cricket player. These carvings are believed to have been made by young men from Appledore. Above the main entrance was another carved panel showing the names of three Kent County Cricket players. This was carved by Cecil Green of Appledore.



Cecil Green with his lintel, naming Mynn, Harris & Pilch

By the 1950s, the roof was in poor condition and the weather vane had been lost. In 1956, when the playing field was levelled, the pavilion was moved to the south side of the field, near the street.

The building was lifted using metal scaffold poles and moved on a low loader trailer to its new position

To move it, the roof, veranda roof, and support posts were removed. The building was lifted using metal scaffold poles and moved on a low loader trailer to its new position, where concrete beams had been prepared. The process was then reversed, the carvings were put back, and a shingle roof was added.



In 1964–65, a new pavilion was built and the old one was used for storage. Over time the old one became badly damaged by woodworm and was demolished in 1983. Most carvings could not be saved, but the main entrance carving survived and is displayed in the pavilion we see today.